

**OUTDOOR SCOREBOARD**  
**8378**

Baseball



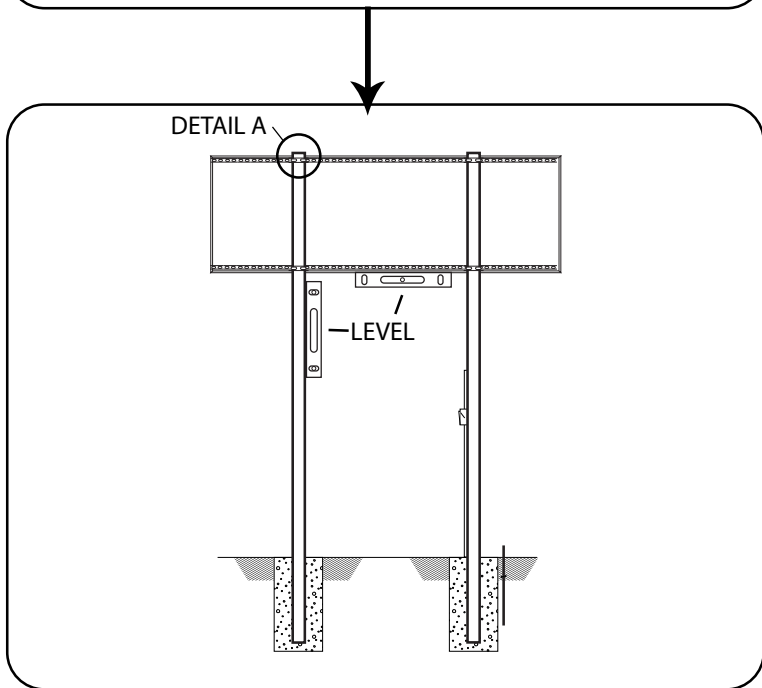
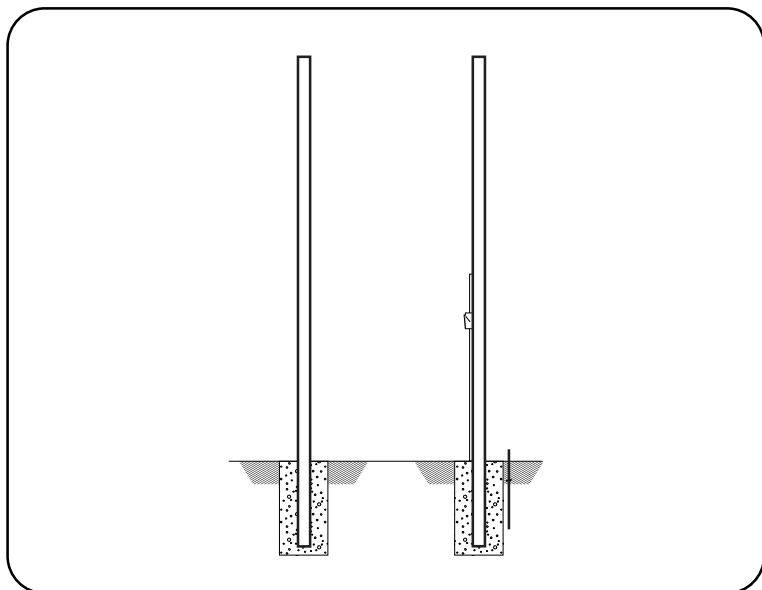
<b>OVERALL DIMENSION</b>	5' high x 16' wide x 5.0" deep. Unistrut mounting (standard) adds an additional 1.625" Depth.
<b>INFORMATION DISPLAYED</b>	Home and Guest Scores, Inning, Ball, Strike, Out, Hit, Error
<b>DIGITS</b>	18" Bright Red, 7-Segment LEDs.
<b>INDICATORS</b>	3" Bright Red LEDs, circular configuration.
<b>CAPTIONS</b>	White vinyl letters.
<b>HORN</b>	Horn not included. External 100 dB Vibrating Horn or 120dB Trumpet Horn are available.
<b>CONSTRUCTION</b>	5" extruded aluminum frame, .093" thick, mill finish. Faces made from shatter proof polycarbonate.
<b>STANDARD COLORS</b> (Custom Colors Available)	
<b>ELECTRONICS</b>	100% solid state, microprocessor controlled system.
<b>SERVICING</b>	Front access for ease of servicing. Plug in modules for ease of replacement.
<b>MICROPROCESSOR CONTROL CONSOLE</b>	<p>Sold separately. Extruded Aluminum, high impact low profile microprocessor control console, latest state of the art, user friendly. Size: 13.25" wide x 5" high x 9" deep. Weight: 6 lbs. Microprocessor to be supplied with 25 feet of cable (hardwire). Microprocessor control console with membrane keyboard provides for direct entry of all information. Radio Control is available.</p>
<b>JUNCTION BOX</b>	One outdoor rated junction box, 5" x 3" with cover and ethernet cable. (Hardwire)
<b>DATA CABLE</b>	Twisted pair, direct burial, RJ45 Connectors (Hardwire).
<b>POWER REQUIREMENTS</b>	115/230 VAC. 50/60 Hz. Minimum one 20A circuit is recommended.
<b>INSTALLATION</b>	Typically installed on two posts. Mounting kits are supplied with scoreboard. <i>NOTE: Number of posts must be determined locally by licenced engineer.</i>
<b>WEIGHT</b>	Net 337 lbs / Shipping 600 lbs.
<b>WARRANTY</b>	Five year guarantee against defects in materials and workmanship. Factory repair service for parts in warranty. Union label. UL Certified.

**STANDARD VARIATIONS** - Add suffix to model number in order that they appear below.

<b>Model + RV2</b>	Radio upgrade. 2.4 GHz spread spectrum, 1500' expected range.
--------------------	---

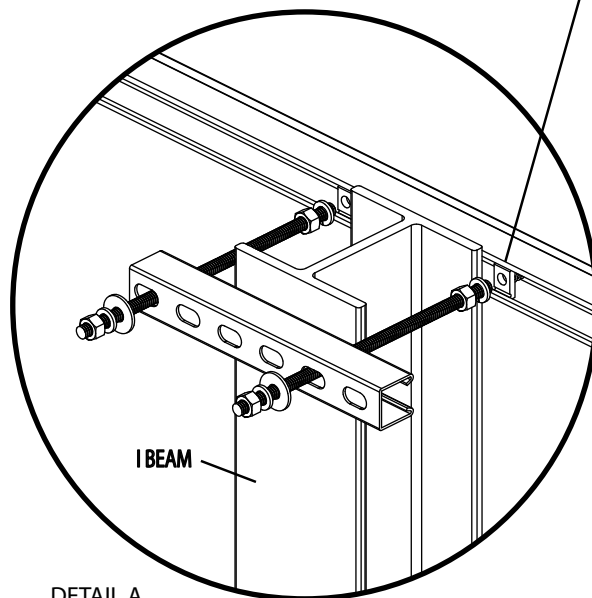
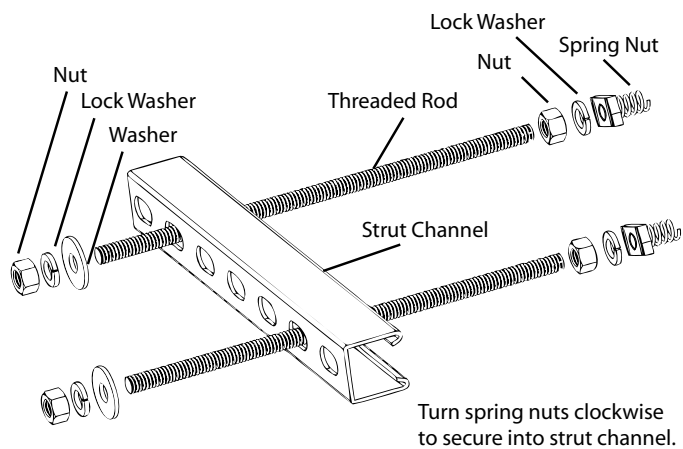
### Typical Single-Cabinet Scoreboard Installation Illustration

NUMBER OF POLES SHOWN ONLY FOR REFERENCE. MUST BE DETERMINED LOCALLY BY LICENCED ENGINEER.

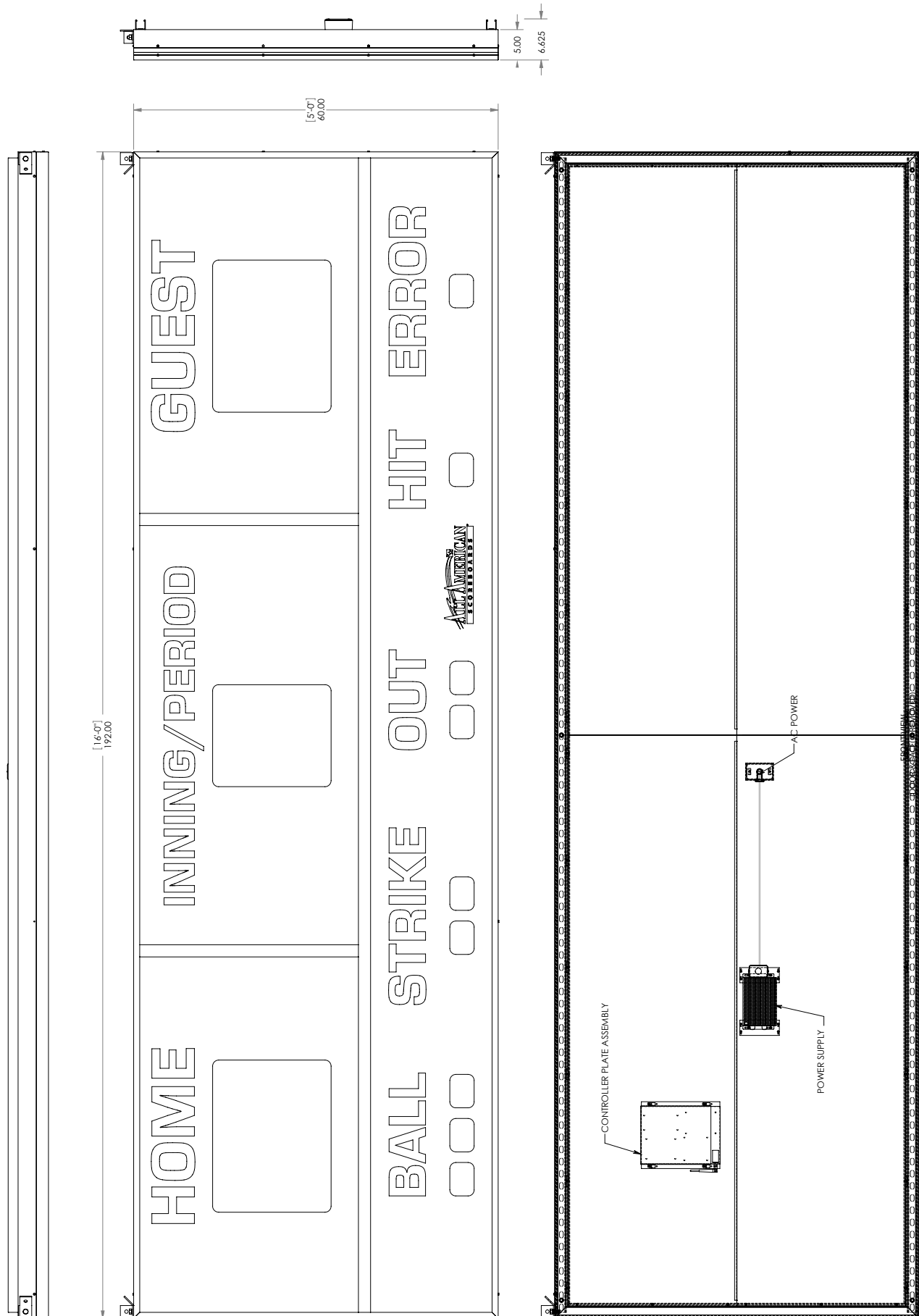


### Mounting Kit

Quantity of kits depends on board and number of poles required. Installed at every point where a pole and a strut channel intersect. *Local ordinances, soil conditions and wind load requirements may require additional structure.*

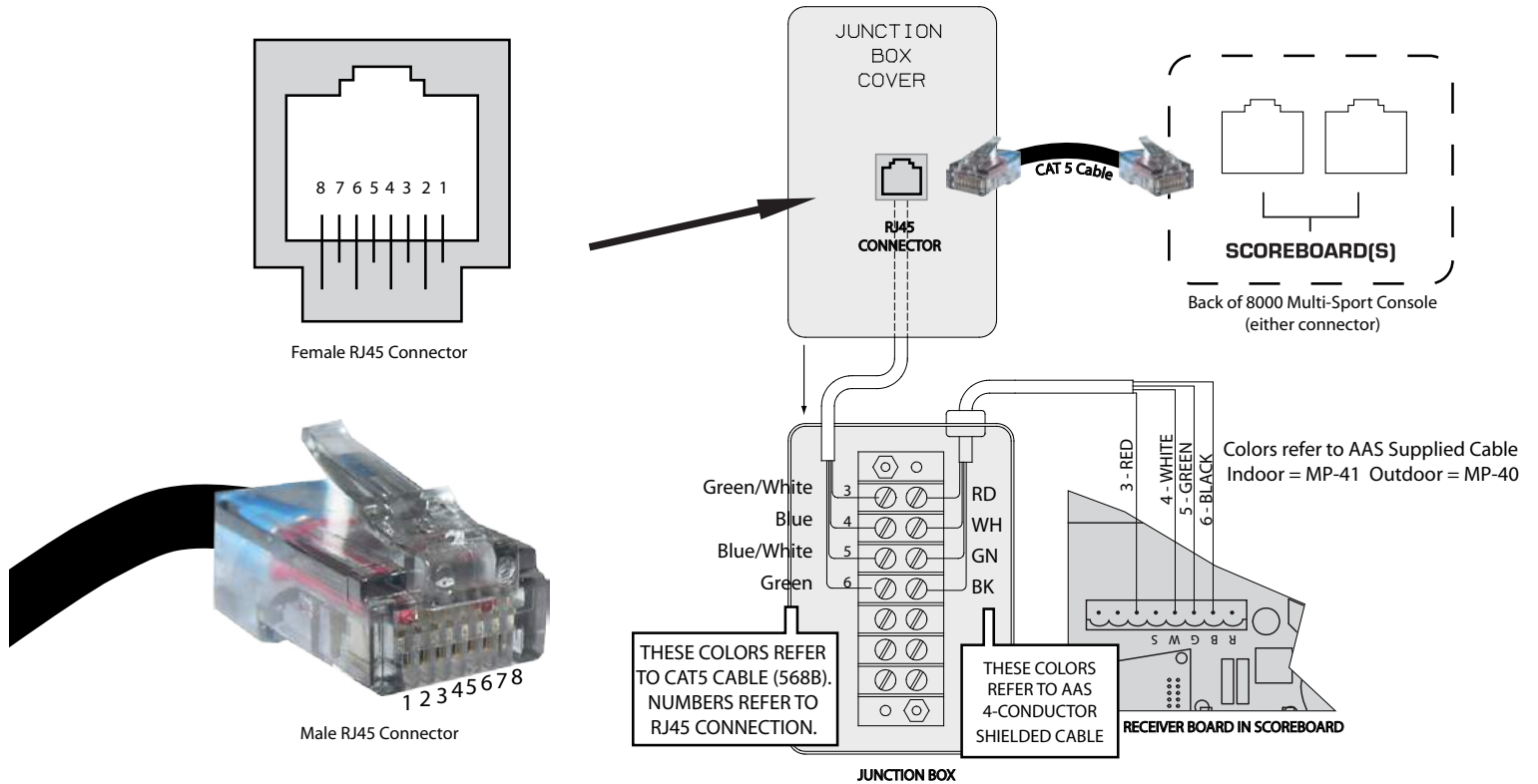


DETAIL A.  
Pressure hold scoreboard cabinets to poles.  
Secure with weld.



# Hardwire Scoreboard Wiring

## With a Standard Junction Box



# Wiring a Supplemental Display

## With a Single Junction Box

